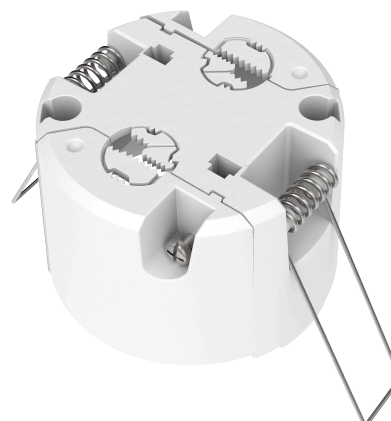


5001 Recess Spring Mount

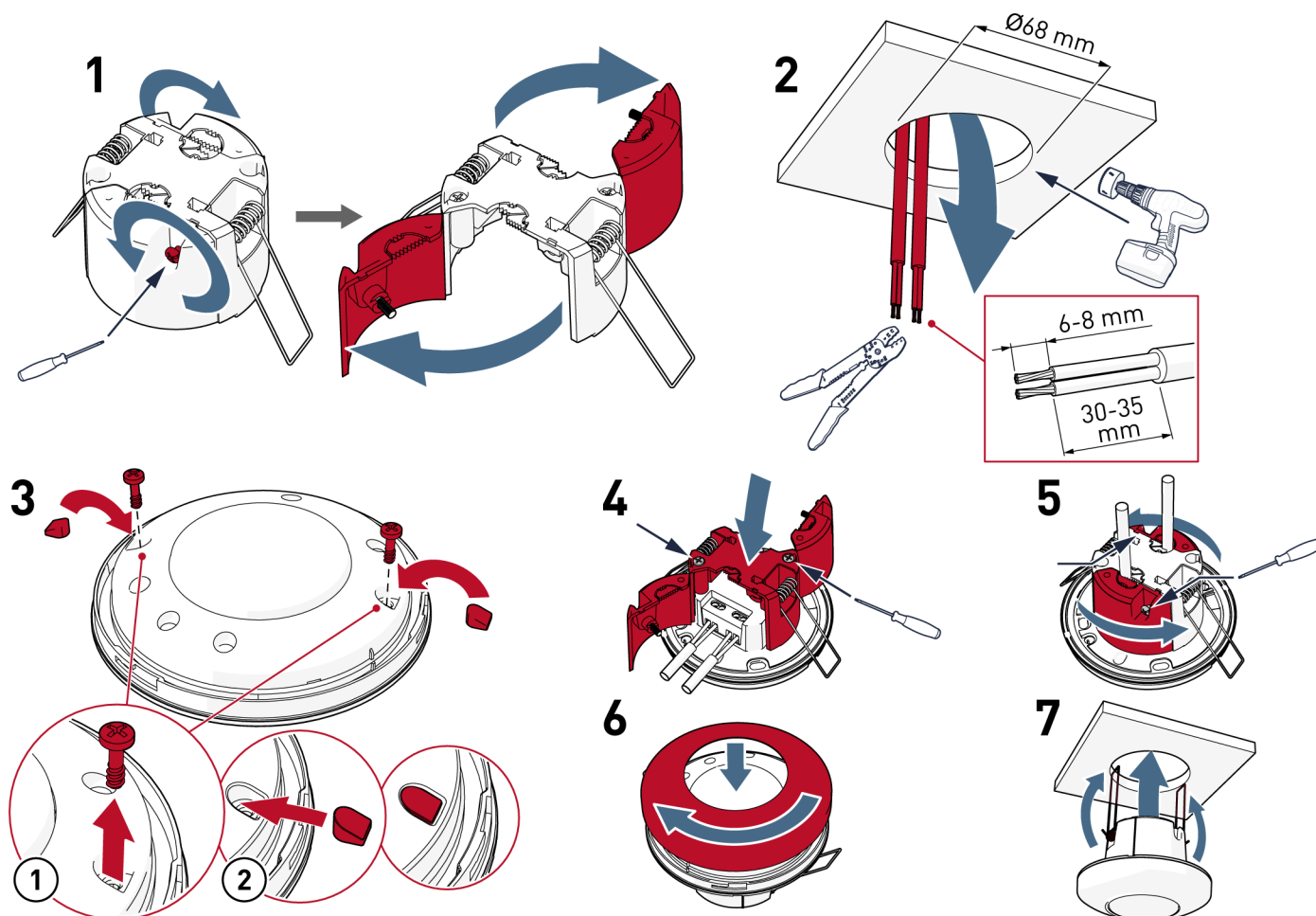
Accessory for recess mounting an ActiveAhead Node Multisensor to the ceiling. This product is included with the 5640 Node Multisensor product.

Key Features

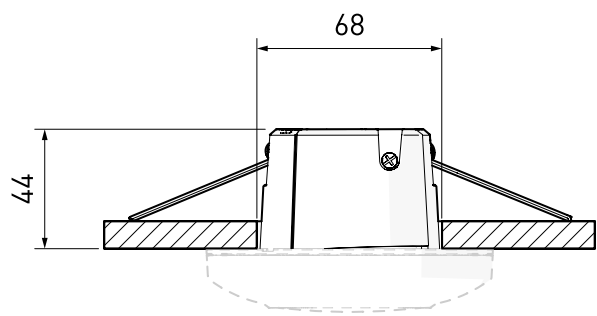
- Easy installation to recessed ceiling
- Suitable for a 68 mm diameter cutout
- Compatible with 5640 Node Multisensor and 5641 Node Multisensor High Bay



Mounting



Dimensions (mm)



Technical Data

Mechanical data	
Material:	Polycarbonate
Colour:	Translucent
Fire retardant:	Yes
Weight:	31 g

Order code	
5001	Recess Spring Mount

Operating and storage conditions	
Operating temperature:	0 °C to +50 °C
Storage temperature:	-40 °C to +70 °C

Conformity and standards	
Conformity:	CE UK CA
Safety:	EN 61347-2-11
Environment:	Complies with WEEE and RoHS directives