

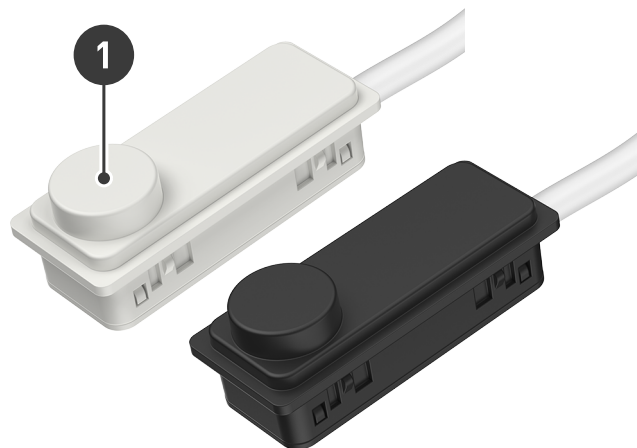
# 5633 ActiveAhead Node R40

The ActiveAhead Node R40 is a member of the truly intelligent wireless lighting control solution Helvar ActiveAhead®. This extremely compact and sophisticated unit contains radio antenna and processor. The Node R40 design allows for multiple mounting options within a luminaire and excellent communication in all directions using a Bluetooth® Mesh network to communicate wirelessly.

The cable is already wired to the unit meaning easy and quick luminaire assembly. Simply plug the connector of the cable directly into a Helvar Components Freedom LED driver or an ActiveAhead Adapter DA.

Once installed, configuration can be easily done using the ActiveAhead mobile app. Note that Node R40 is shown as a Node Sense on the mobile app.

The product is available in white and dark grey.



1. Radio antenna

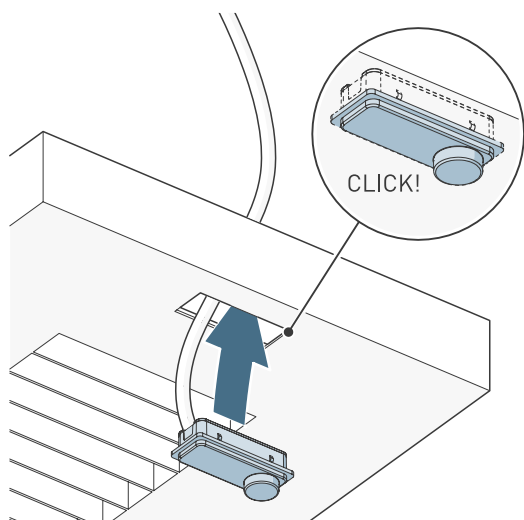
## Key features

- Follows the 5634 ActiveAhead Node Sense design and dimensions for fast luminaire assembly
- Small and inconspicuous, the compact unit does not change the appearance of the luminaire
- Part of the ActiveAhead wireless lighting control solution

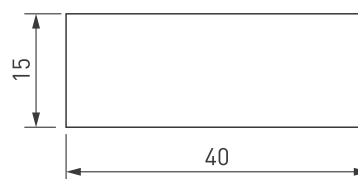
## Mounting

The ActiveAhead Node R40 can be mounted to a luminaire in three ways:

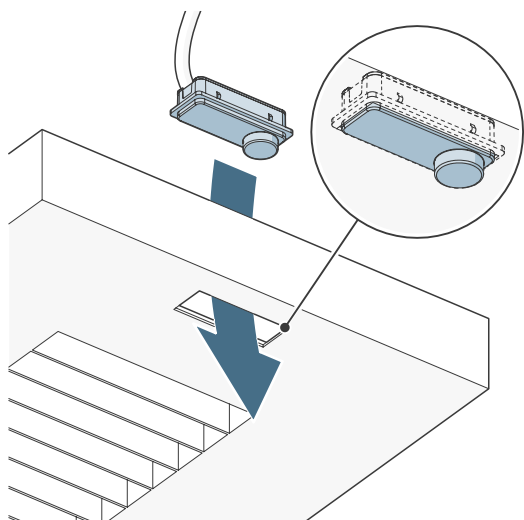
1) When mounting from outside in, carefully push the unit into the cutout until it 'clicks' into place and sits flush with the luminaire casing.



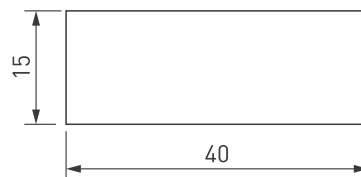
### Cutout dimensions (mm)



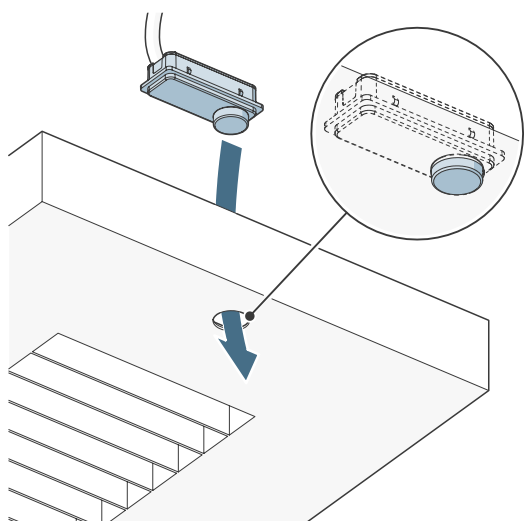
2) When mounting from inside out, ensure the face of the unit sits level with the luminaire casing and secure the Node in place.



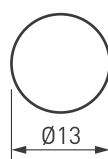
## Cutout dimensions (mm)



3) When mounting with drilled cut-outs make sure the radio antenna sits correctly within their allocated areas.

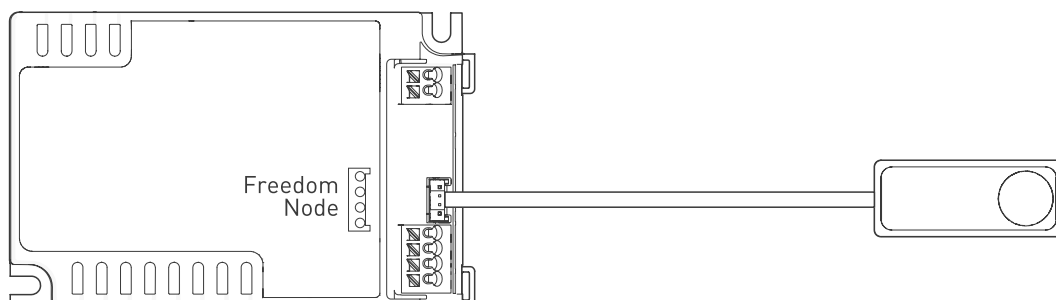


## Cutout dimensions (mm)



## Connections

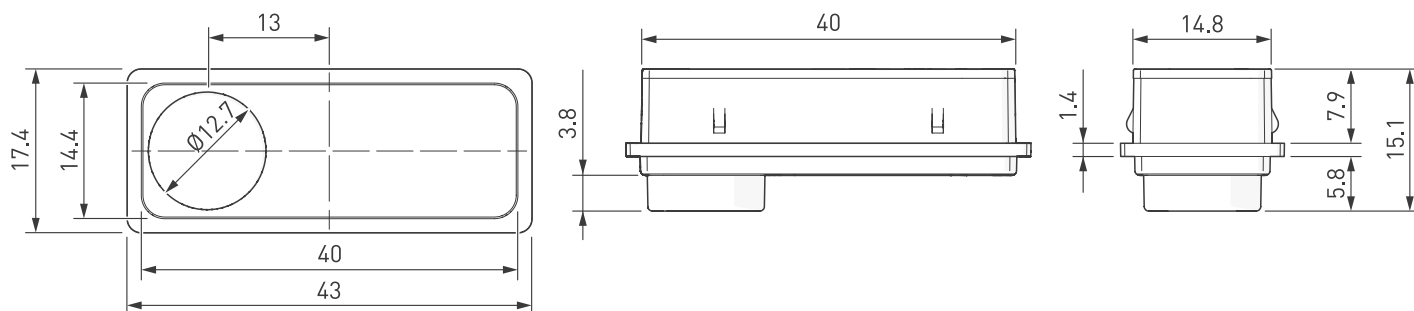
Connecting the Node R40 to a Helvar Components Freedom LED Driver.



**Note:** Ensure connector securely 'clicks' into place when plugged in correctly.

**Note:** If the sensor is connected to non-SELV control gear, the luminaire must be Class I.

## Dimensions (mm)



## Technical Data

### Connections

**ActiveAhead:** Flexible cable terminated with a four-way, locking connector.

### Electrical Data

**Power Consumption:** 60 mW, max 70 mW

**Input Voltage:** 3.3 V

### Wireless Connectivity

**Frequency:** 2.4 GHz

**Technology:** Bluetooth Mesh

**Antenna Pattern:** Omnidirectional

**Max distance between Nodes:** 15 m in free space

**Note:** To ensure proper operation the mesh network must consist of a minimum 10 ActiveAhead Nodes.

### Order Codes

**5633000** Node R40, White, 80 cm cable

**5633002** Node R40, Grey, 80 cm cable

**Accessories (sold separately):**

**5693** ActiveAhead Node Sense Circular Holder

**5694** ActiveAhead Node Sense Rectangular Holder

### Operating conditions

**Ambient temperature:** 0 °C to +40 °C

**Relative humidity:** Max. 85 %, noncondensing

**Storage temperature:** -20 °C to +70 °C

### Mechanical data

**Dimensions:** 43 × 17.4 × 15.1 mm

**Material (casing):** Fire-retardant plastic

**Colour:** White (RAL 9003)

Grey (RAL 7016)

**IP rating:** IP30

**Weight:** 20 g

### Conformity and standards

**Conformity:**  

**EMC emission:** EN 55015

**EMC immunity:** EN 61547

**RED:** EN 300 328, EN 301 489-1, EN 301 489-17

**Safety:** EN 61347-2-11

**Environment:** Complies with WEEE, RoHS and REACH directives.