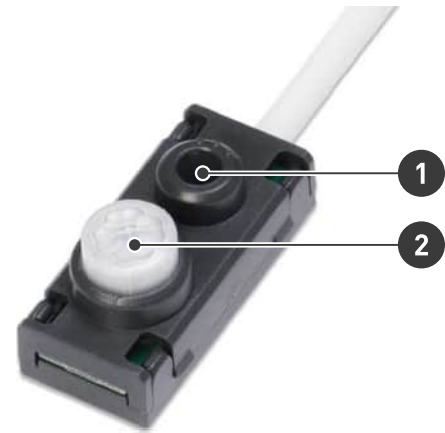


5630 ActiveAhead Sense

The ActiveAhead Sense is a small luminaire-based sensor that combines a light sensor for constant light control and a passive infrared movement detector.

This sensor can be used on the self-learning smart wireless lighting control solution Helvar ActiveAhead.

If the sensor is connected to non-SELV control gear, the luminaire must be Class I.

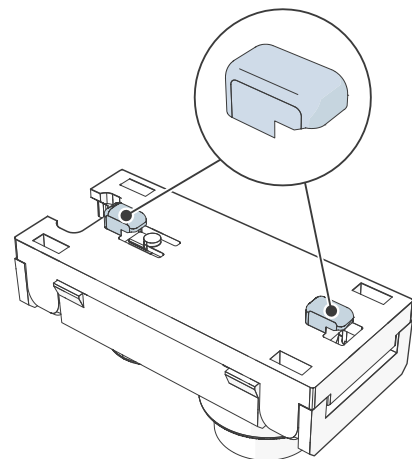


1. Light sensor
2. PIR sensor

Key Features

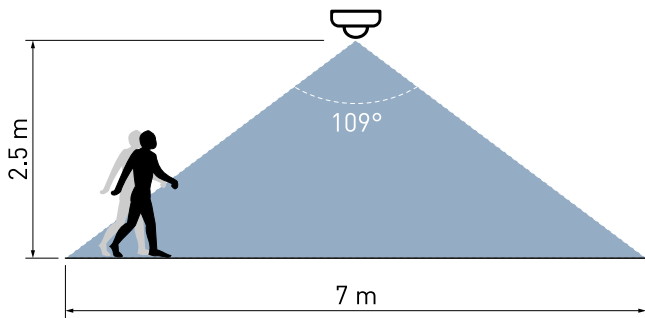
- Small and inconspicuous, it does not change the appearance of the luminaire.
- Provided with mounting features that can be snapped into sheet metal: two on each long side, and two on the rear.
- Part of the ActiveAhead self-learning wireless lighting control solution.

Mounting features



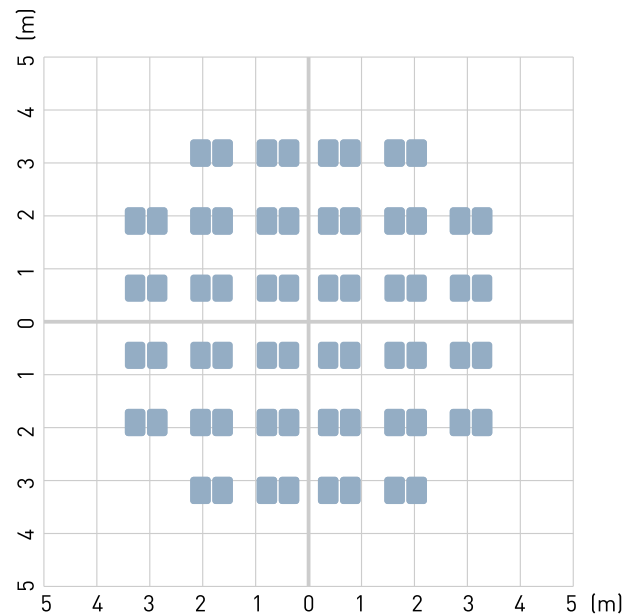
Detection

Detection Coverage



Max. recommended mounting height: 4 m

Detection Pattern

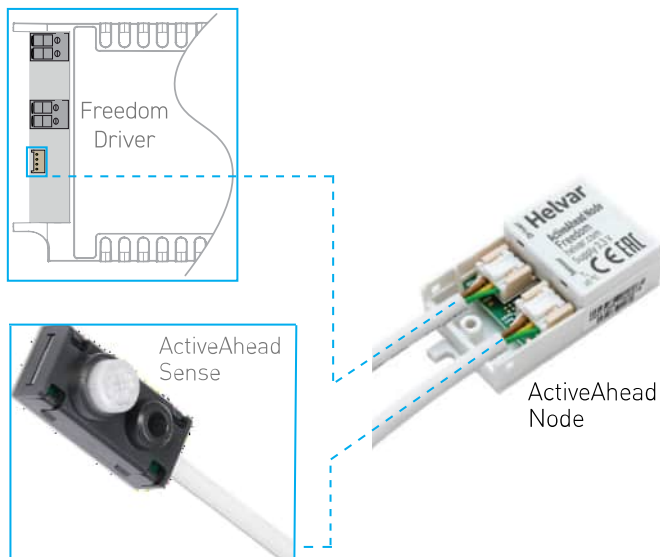


Detection Pattern at floor level for 2.5 m mounting height

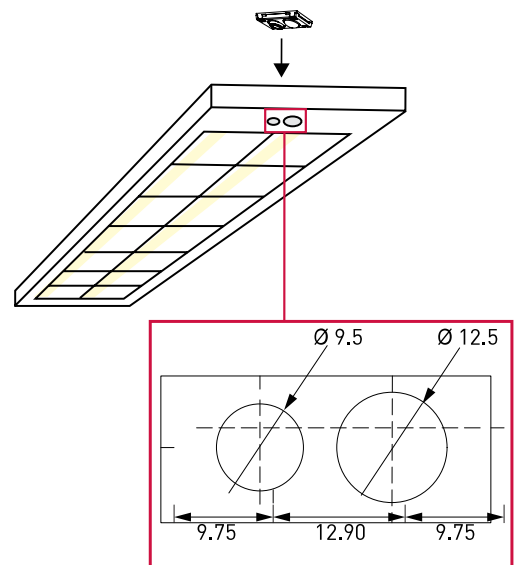
Detection range and sensitivity depends on the speed and size of the moving object as well as its temperature difference to the surroundings. Moving directionally towards the sensor will give worse detection than crossing the detection area on an angle.

Connections

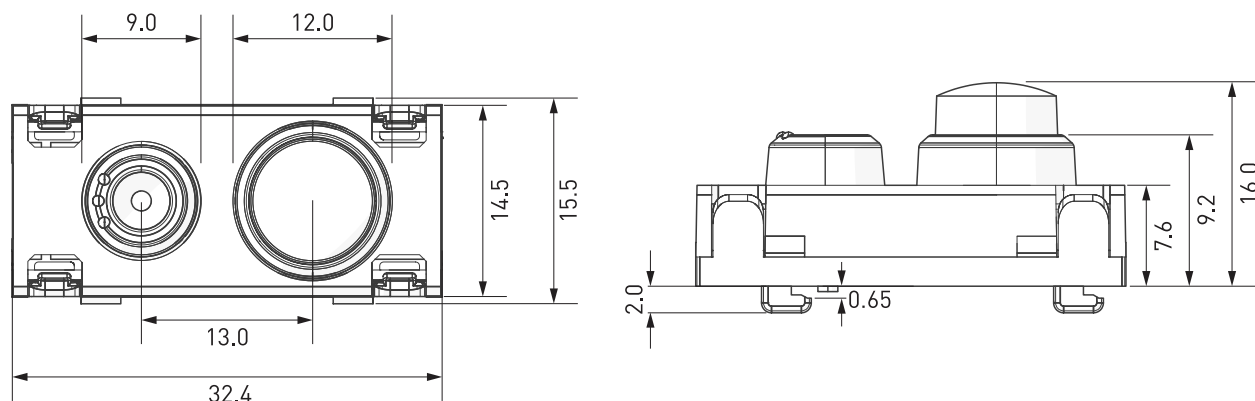
Picture below presents how a 5630 ActiveAhead Sense is connected using ActiveAhead Node and Freedom LED driver.



Mounting



Dimensions (mm)



Note: Sensor holders are available to be used with the ActiveAhead Sense:

- 5691 - ActiveAhead Sense Rectangular Holder
- 5692 - ActiveAhead Sense Circular Holder

Technical Data

Connections

Freedom: Flexible cable terminated with a four-way, 2 mm locking connector

Note: If the sensor is connected to non-SELV control gear, the luminaire must be Class I.

Movement detection sensor

Technology: Passive infrared (PIR) detects moving temperature differences

Detection coverage area: 38 m² @ 2.5 m mounting height achieved with:

- 8 C° temperature difference to target
- 1.0 m/s movement speed
- 700 x 250 mm object size

Max. recommended mounting height: 4 m

Operating and storage conditions

Operating temperature: -20 °C to +50 °C

Note: The temperature difference between the detection target and the background must be at least 4 °C.

Relative humidity: Max. 85 %, noncondensing

Storage temperature: -20 °C to +70 °C

Mechanical data

Dimensions: 32.4 mm × 15.5 mm × 18 mm

Material (casing): Fire-retardant PC/ABS blend.

Colour: White (RAL 9003)

Anthracite Grey (RAL 7016)

IP rating: IP30

Weight: 22 g

Light sensor

Technology:	Closed loop reflected light
Illuminance:	5 lx to 5000 lx
Max. recommended mounting height:	3 m

Order codes

5630	Length: 80 cm, Colour: White
5630-30	Length: 30 cm, Colour: White
5630-150	Length: 150 cm, Colour: White
5630B	Length: 80 cm, Colour: Anthracite Grey
5630B-150	Length: 150 cm, Colour: Anthracite Grey

Conformity and standards

Conformity:	
EMC emission:	EN 55015
EMC immunity:	EN 61547
Safety:	EN 61347-2-11
Environment:	Complies with RoHS directive.