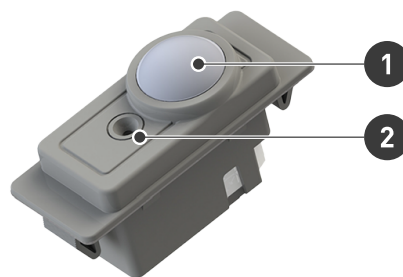


325D2 Multisensor High Bay DALI-2 R60

The 325D2 Multisensor High Bay is a luminaire-based DALI-2 sensor that combines a PIR sensor for movement detections and a light sensor for constant light output. This sensor complies with the DALI-2 parts 303 and 304 and follows the Zhaga Book 20 mechanical dimensions for a rectangular sensor that fits into a 60 mm x 22 mm slot on a luminaire.

This sensor can be used with a Helvar DALI-2 multi-master lighting control solution, such as the Helvar 950 Application Controller.



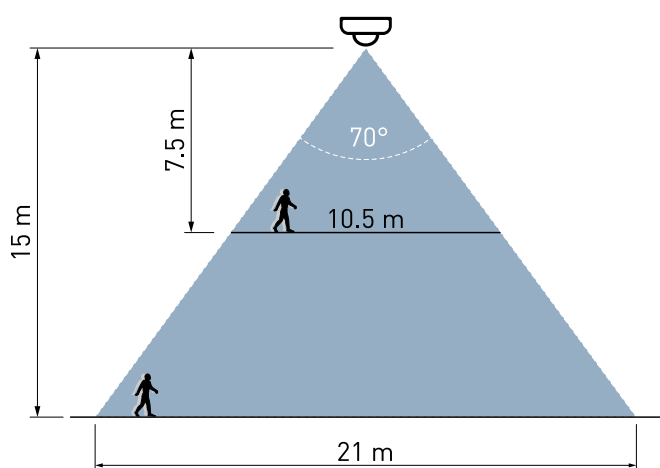
1. PIR sensor
2. Light sensor

Key Features

- Small luminaire based DALI-2 high bay multisensor
- Fits into a standard Zhaga Book 20 based rectangular 60 mm x 22 mm (+/- 0.2 mm tolerance) luminaire slot
- 10 mA DALI current consumption
- DALI-2 certified input device

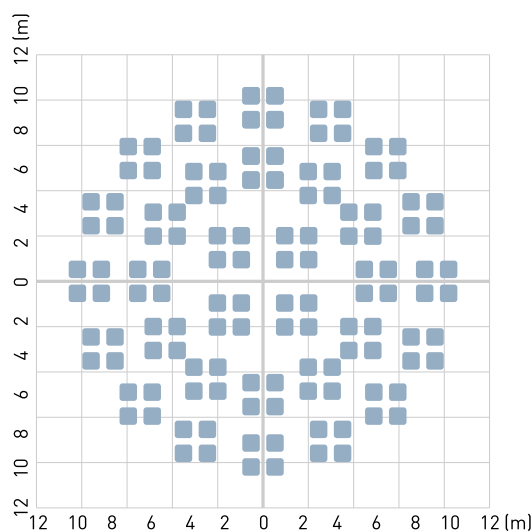
Detection

Detection Coverage



Max recommended mounting height: 17 m

Detection Pattern



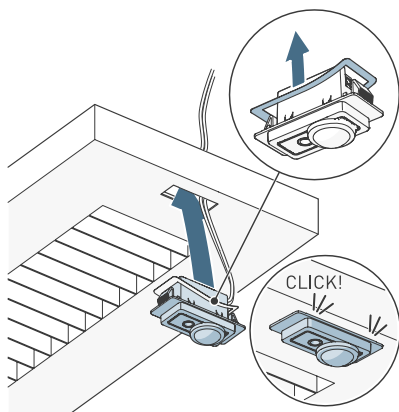
Detection Pattern at floor level for 15 m mounting height

Detection range and sensitivity depends on the speed and size of the moving object as well as its temperature difference to the surroundings. Moving directionally towards the sensor will give worse detection than crossing the detection area at an angle.

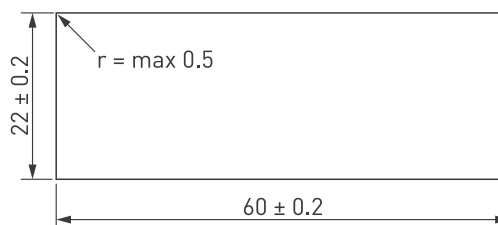
Mounting

The Multisensor High Bay DALI-2 R60 can be mounted to a luminaire in three ways:

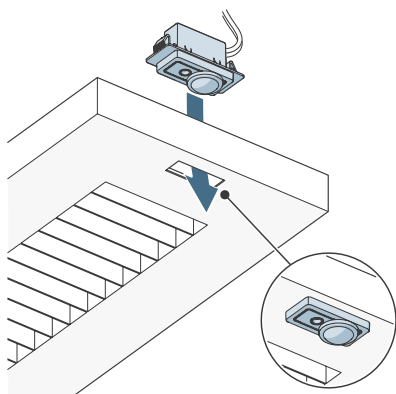
- 1) When mounting from outside in, carefully push the unit into the cutout until it 'clicks' into place and sits flush with the luminaire casing.



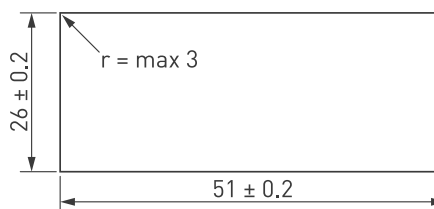
Cutout dimensions (mm)



- 2) When mounting from inside out, ensure the face of the unit sits level with the luminaire casing and secure the unit in place. The supported luminaire frame thickness in the range $0.4 \leq d \leq 1.5$ mm.

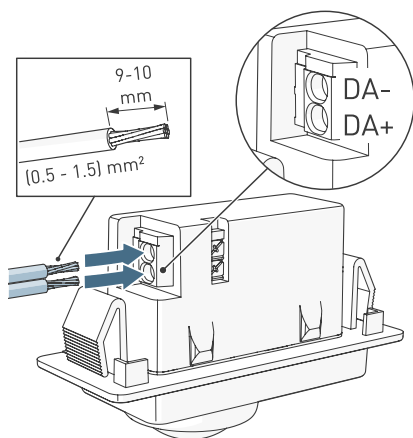


Cutout dimensions (mm)

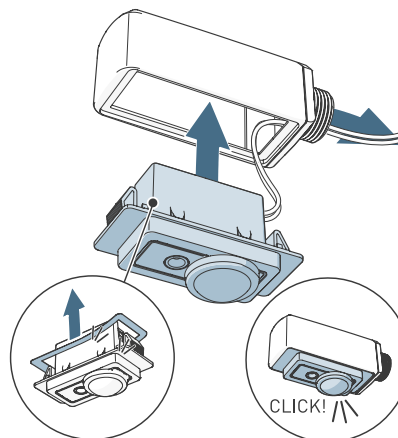


- 3) Using a 5696G - Holder Batten R60 accessory (sold separately).

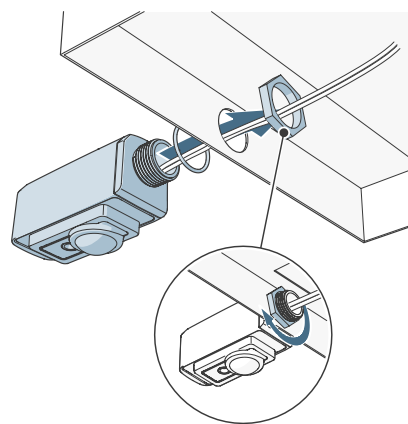
1. Connect the DALI cables.



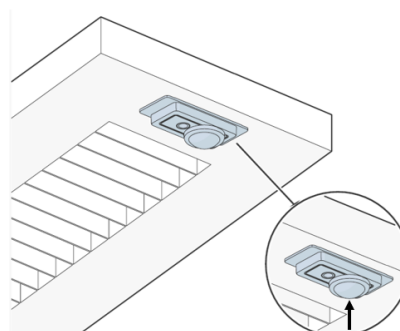
2. Remove the tape liner and feed the cable through the holder. Push the unit into the holder.



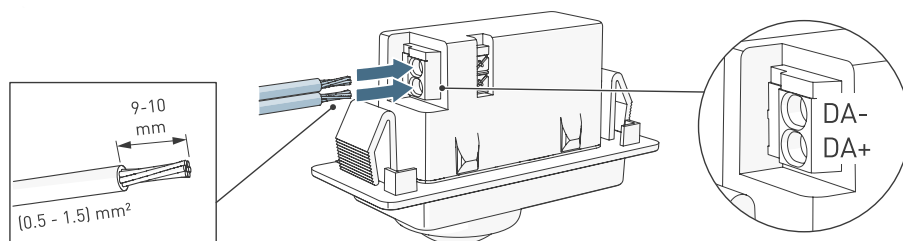
3. Feed the cable through the hole in the luminaire.
Connect the cable to the Node. Fasten the holder to the luminaire using the O-ring and a M20 nut.



Note: To avoid PIR lens deformation, the PIR lens must be protected from mechanical pressure. Special care must be taken during sensor mounting as well as luminaire transport and installation.

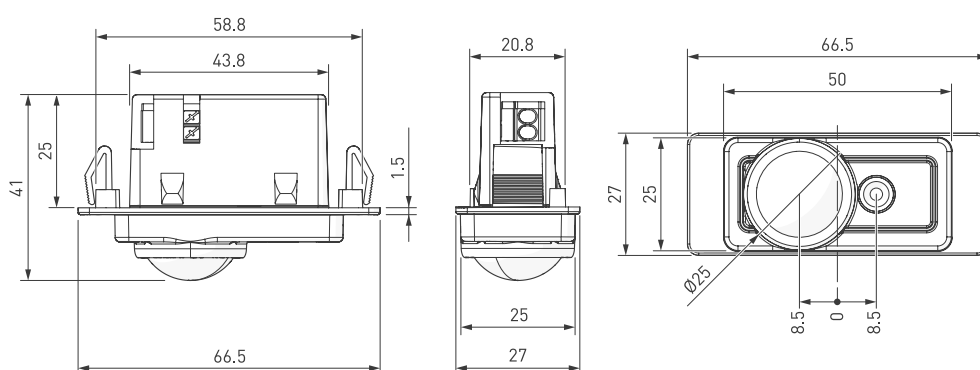


Connections



Note: To remove DALI wiring, push down the release buttons.

Dimensions (mm)



Technical Data

Connections

DALI:	Push-fit terminals for the DALI wires.
	Wire section: 0.5–1.5 mm ² , solid or stranded
Cable rating:	All cables must be mains rated.

Electrical Data

DALI supply input:	12–22.5 V
DALI consumption:	10 mA Max

Movement detection sensor

Technology:	Passive infrared (PIR) detects moving temperature differences
Detection coverage area:	346 m ² @ 15 m mounting height 87 m ² @ 7 m mounting height achieved with: 8 C° temperature difference to target 1.0 m/s movement speed 700 x 250 mm object size
Max. recommended mounting height:	17 m

Light sensor

Technology:	Closed loop reflected light
Illuminance:	5 lx to 5000 lx

Order codes

325GD2	Multisensor High Bay DALI-2 R60 Grey
Accessories (sold separately)	
5696G	Holder Batten R60 Grey



Operating and storage conditions

Ambient temperature:	-20 °C to +50 °C
	Note: The temperature difference between the detection target and the background must be at least 4 °C.
	Note: Frost on the lens may block the detection.
Relative humidity:	Max. 85 %, noncondensing
Storage temperature:	-20 °C to +70 °C

Mechanical data

Dimensions:	66.5 x 27 x 41 mm
Material (casing):	Fire-retardant PC/ABS blend
Colour:	Grey (RAL 7035)
Weight:	19 g
IP rating:	IP65 front, IP20 back

Conformity and standards

Conformity:	 
EMC emission:	EN 55015
EMC immunity:	EN 61547
DALI:	IEC 62386, Parts 101, 103, 303 and 304
Safety:	EN 61347-2-11
Environment:	Complies with WEEE, RoHS and REACH directives.