

3901 ENVIRONMENTAL SENSOR

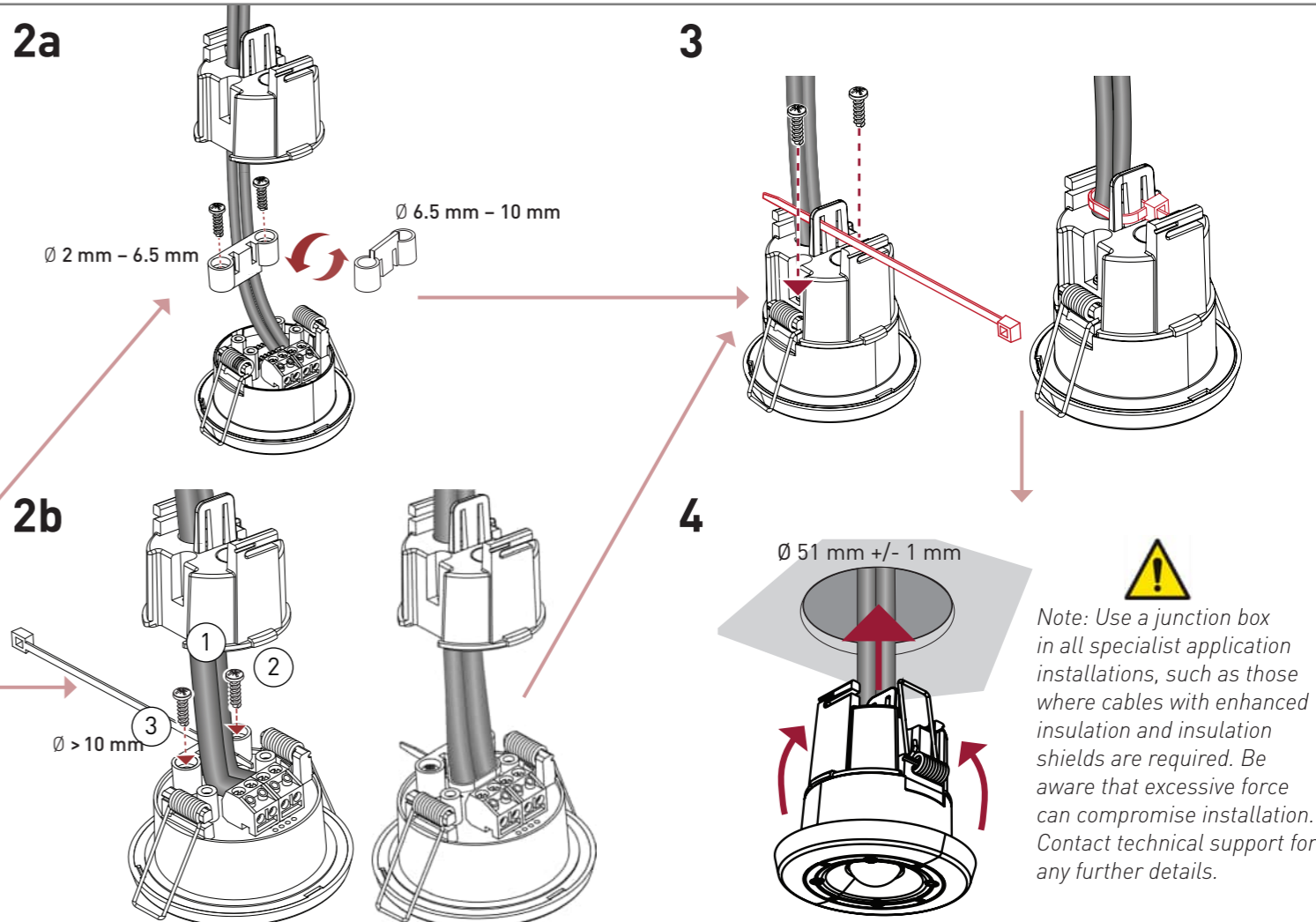
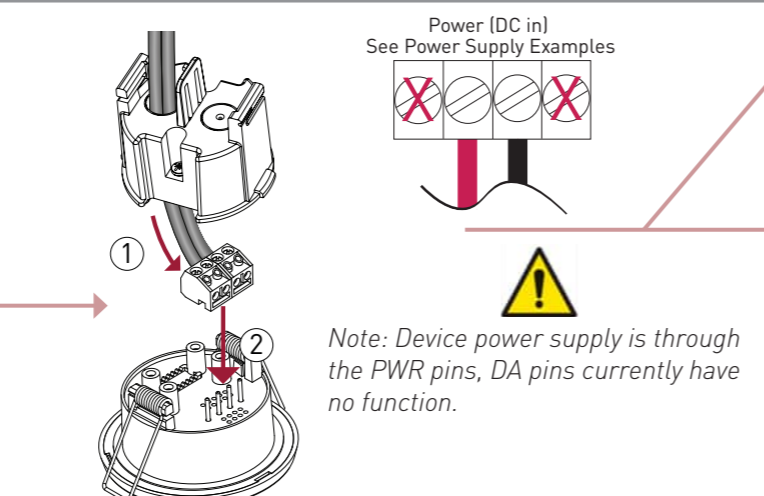
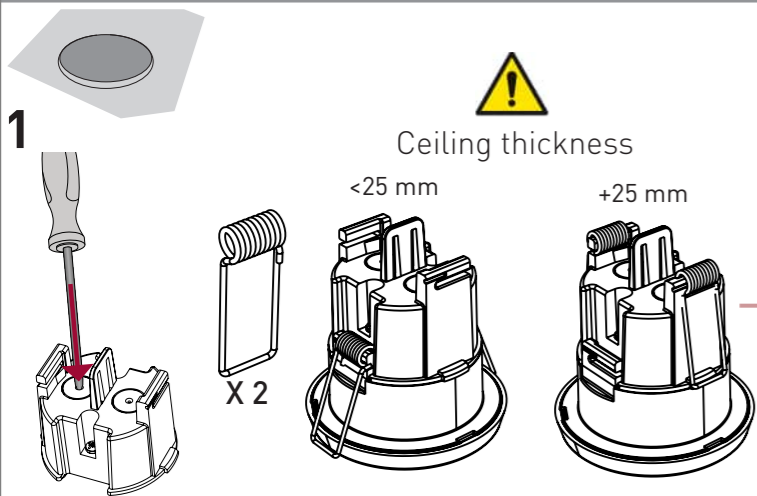
Installation notes:

- Do not install near an air conditioning unit, a heating unit or in a dusty environment.
- Nearest ActiveAhead device has to be within a 5 m range.
- A minimum of ten ActiveAhead nodes are required for a mesh network.
- Maximum radius of coverage to furthest luminaire is 30 m (via several luminaire hops)

For Insights - All nodes must be within a 20 m radius of the ActiveAhead Controller. The closest three nodes must be within 5 m.



Installation Guide

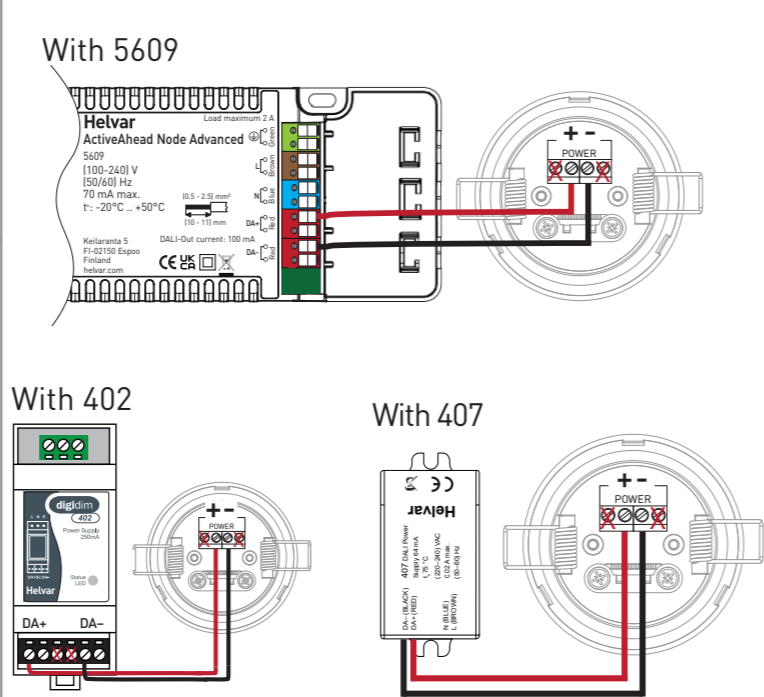


If the sensor is being fitted using an SBB-E Mounting Box, scan the QR code for installation details

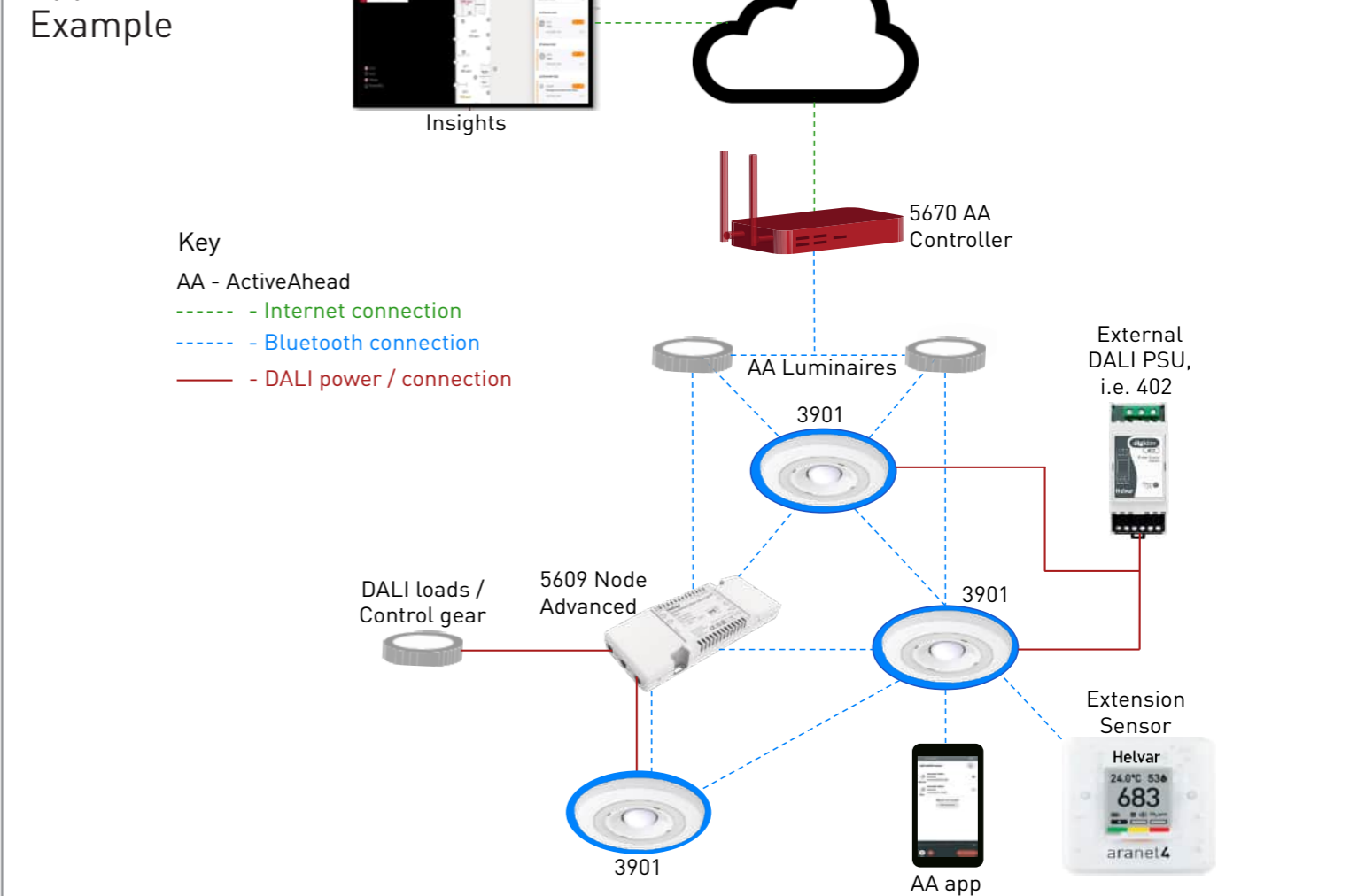


Power Supply Examples

! Note: Refer to power supply of the product in the Technical data of the installation guide or datasheet to determine max 3901 connectivity and connection options. 3901 consumes 60 mA max.





Application Example





Helvar Oy Ab
Keilaranta 5, 02150, Espoo, Finland
www.helvar.com
+358 9 5654 1

Helvar Ltd
Hawley Mill, Hawley Road,
Dartford, Kent, UK
DA2 7SY
www.helvar.com
+44 (0) 1322 617200

Technical Data

| Connections | |
|---|---|
| DALI: | Removable connector block, DALI communication not yet supported. |
| Wire section: | 0.5 mm ² – 1.5 mm ² solid or stranded. |
| Cable rating: | All cables must be mains rated. |
| <i>Note: Power and DALI pins are not internally connected together.</i> | |
| Electrical data | |
| DC supply input: | 9-22.5 V (Pins marked PWR) |
| Max current: | 60 mA. Only use DALI power supply. |
|  <i>Do not connect a power supply other than a current limited max 250 mA DALI PSU</i> | |
| Sensors | |
| Light: | Photocell, light level measurement. |
| Occupancy detection: | Passive infrared (PIR). |
| Enhanced occupancy detection: | This feature extends occupancy timeout to a fixed period when PIR is not detecting any movement any more but speech is detected. PIR trigger is required to turn on lighting first. |
| <i>Note: Recommend using for enclosed, quieter spaces as meeting rooms, cell offices. Avoid using feature in open plan, or louder spaces as this may generate false noise occupancy triggers, disable/enable feature via App if required.</i> | |
| Sound level (Ambient noise): | Microphone. |
| <i>Note: General Data Protection Regulation (GDPR) compliant.</i> | |
| Climate: | Ambient temperature and Relative Humidity. |
| Air quality: | eCO2 and TVOC |
| <i>Note: Air quality measurements typically require two days to calibrate upon each power up. Up to seven days in environments with a lack of fresh air.</i> | |
|  <i>eCO2 and TVOC measurements are indicative estimations only and cannot be taken as exact values.</i> | |
| Wireless connectivity | |
| BLE: | 2.4 GHz |
| Max transmit power: | 0 dBm |
| Antenna pattern | Omni-directional |

| Operation | |
|--|--|
| Start-up time | <5 seconds |
| <i>Note: Allow up to 5 minutes for the TVOC / eCO2 sensor to start measurements.</i> | |
| Operating and storage conditions | |
| Ambient temperature: | 0 °C to +40 °C |
| Relative humidity: | Max. 90 %, non-condensing. |
| Storage temperature: | 0 °C to +70 °C |
| <i>Note: The temperature difference between the PIR detection target and the background must be at least 4 °C.</i> | |
| Compatibility | |
| ActiveAhead | |
| Mechanical data | |
| Max. recommended mounting height: | 4 m |
| Presence detection coverage area: | 46 m ² @ 2.5 m mounting height. |
| Mounting hole diameter: | 51 mm +/- 1 mm |
| Ceiling thickness: | Maximum 25 mm |
| Bezel diameter: | 66 mm |
| Recommended clearance depth: | 10 cm (with cable cover, incl. 5 cm for cabling). |
| Material (casing): | Flame retardant PC/ABS (UL94-V0) |
| Finish/Colour: | Semi-matt / White RAL 9003 |
| Weight: | 60 g |
| IP rating: | IP20 |
| Conformity and standards | |
| Conformity: |   |
| RED: | EN 301 489-1, EN 301 498-17, EN 300 328 |
| EMC emission: | EN 55015 |
| EMC immunity: | EN 61547 |
| Safety: | EN 61347-2-11 |
| Environment: | Complies with WEEE and RoHS directives. |

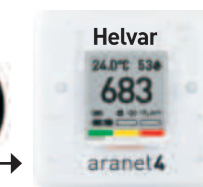
Connecting to an Extension Sensor (to be carried out by a Helvar trained engineer)



Recommended distance <5 m. Max 10 m (open space)



Download the Helvar ActiveAhead app.
Note: Pairing with Extension Sensors only supported via Android App.



Extension Sensor can be freestanding or wall mounted.



With the phone next to the Extension Sensor, open the app and select Connect > Select the Environmental Sensor to be paired > wait for connection confirmation > Devices Tab > + Add Sensors.